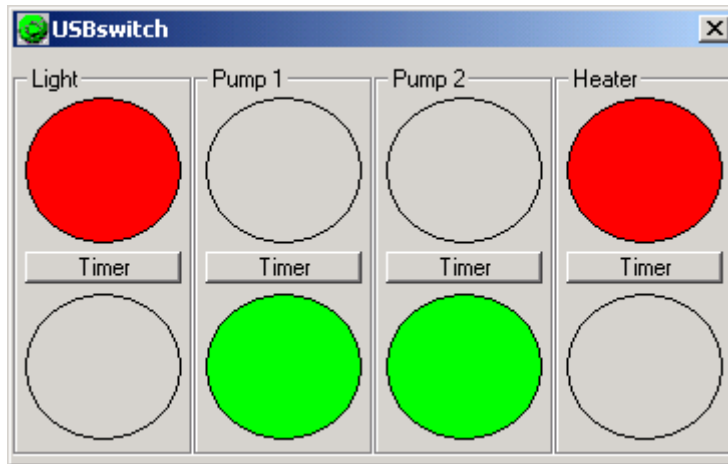
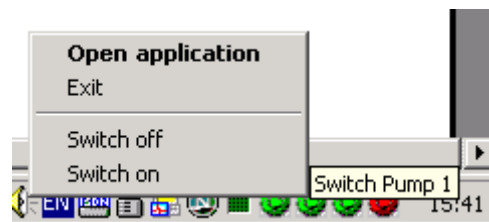


1. USBswitch control program

The little application „USBswitch“ implements a simple control of the connected USB-Switches. When starting the application a little window shows the state of the switches. Red and green circles indicates off and on states. Clicking on the inactive circle changes the state.

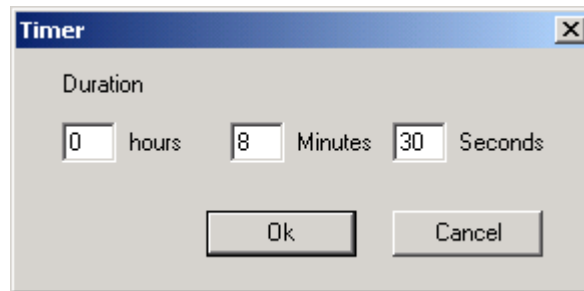


When closing the window the application will be minimized to the system tray. Every connected USB-Switch will be represented by an individual right colored icon. Switching from the system tray is done by clicking on the right mouse button and choosing the correct entry.

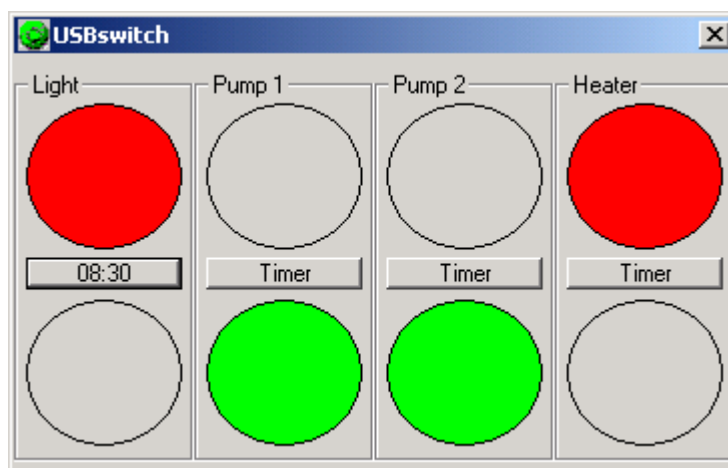


The names of the switches are assigned by the application „ClewareControl“ described later on.

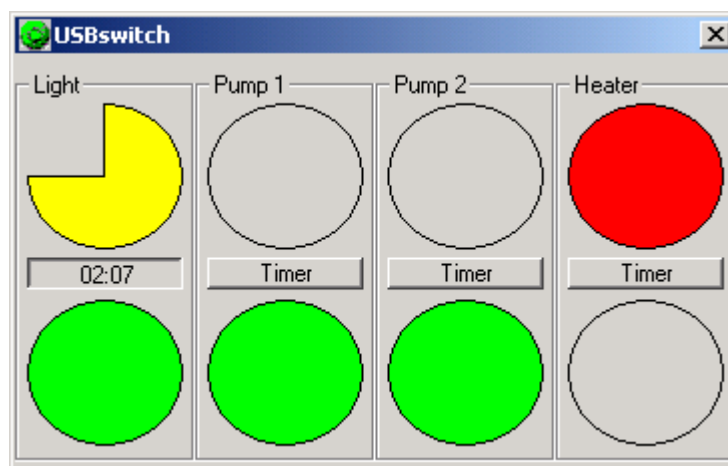
USBswitch supplies a timer functionality for the connected switches. The button “Timer” is used to set the time after which the switch is automatically turned off. The dialog look like this:



USBswitch displays the timer setting in the corresponding timer button.



When the switch is turned on with the lower signal button, the time runs backwards to 00:00:00. Then the switch is turned off. To show the state of the timer, the upper signal shows a yellow pie in a size corresponding to the used time. With the settings above the interface looks like this 2 minutes and 7 seconds before the switch is turned off:



Every switch has it's own timer which runs independent.